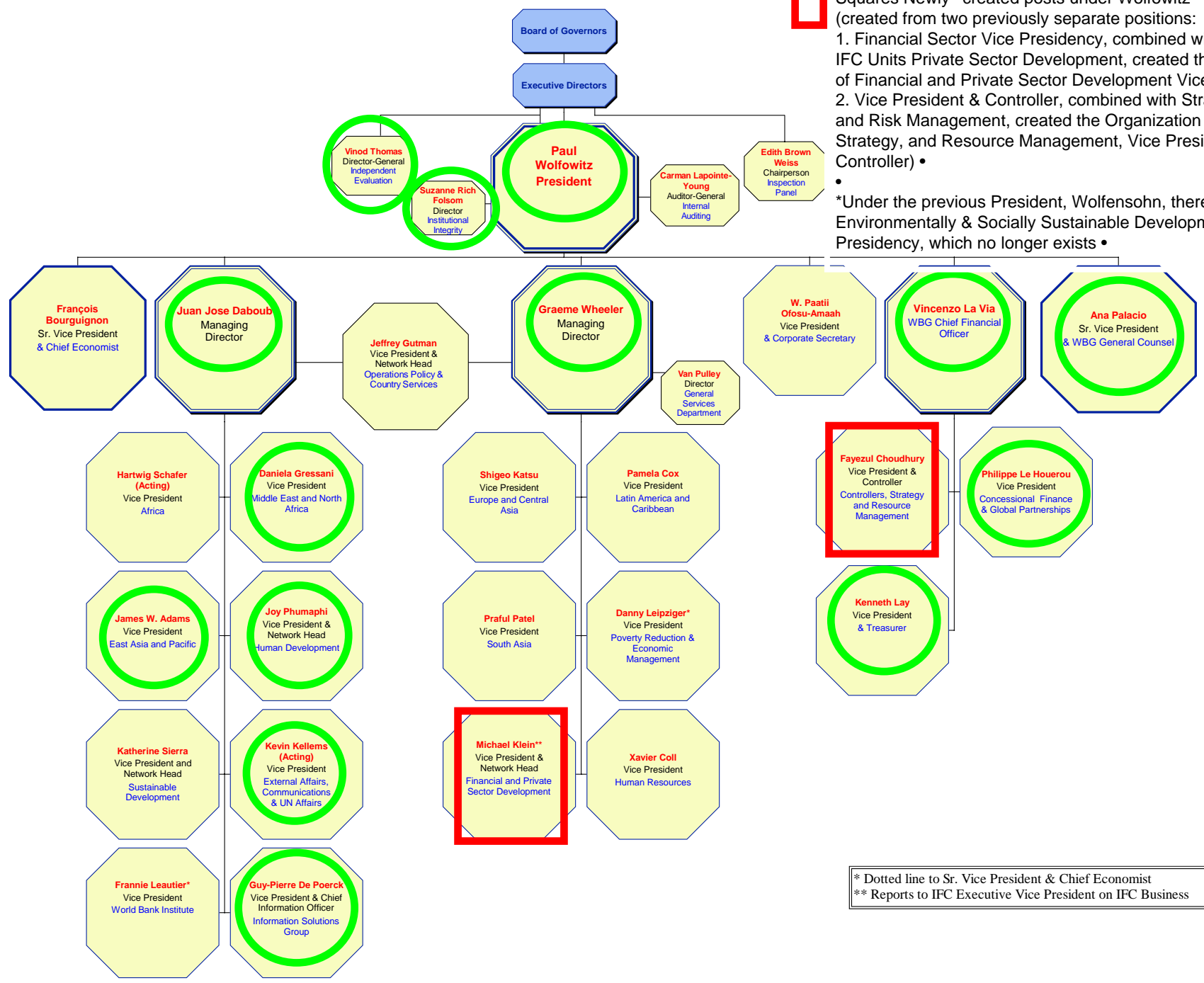




**ORGANIZATION CHART OF THE WORLD BANK - February 2007**

- Legend**
- Circles New appointees under Wolfowitz •
  - Squares Newly created posts under Wolfowitz (created from two previously separate positions:
    1. Financial Sector Vice Presidency, combined with Joint Bank/ IFC Units Private Sector Development, created the Organization of Financial and Private Sector Development Vice Presidency
    2. Vice President & Controller, combined with Strategy, Finance, and Risk Management, created the Organization of Controllers, Strategy, and Resource Management, Vice President and Controller) •
  - \*Under the previous President, Wolfensohn, there was the Environmentally & Socially Sustainable Development Vice Presidency, which no longer exists •



\* Dotted line to Sr. Vice President & Chief Economist  
 \*\* Reports to IFC Executive Vice President on IFC Business